

www: <http://vmcebagn-dev.ird.fr>

contact: ceba.geoportail@ird.fr

CEBA geoportal

- capture and share the basic characteristics of available datasets -

Presentation : Rainer Zaiss

Grégoire Vincent, Gaëlle Viennois

IRD AMAP

Annual LabEx CEBA meeting 2014

Natural History Museum, Toulouse

13 - 14 October 2014

Context labex CEBA

- network of internationally-recognized French research teams
- research on tropical biodiversity

Who does what ?, Who has which data sets ?, ...



CEBA geoportail

- Portal to capture and share the basic characteristics of available datasets
- Metadata to describe the contents and context of your reference datasets
Information about **who, what, when, where, why** and **how** of the resource

- Metadata standard

ISO 19115: *Geographic information – Metadata*

INSPIRE: *EU initiative to establish an infrastructure for spatial information in Europe*

- Application online since July 2014

<http://vmcebagn-dev.ird.fr>

- Powered by geonetwork

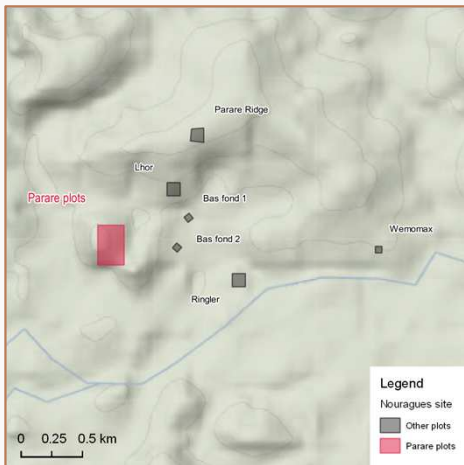
<http://geonetwork-opensource.org/>

Datasets

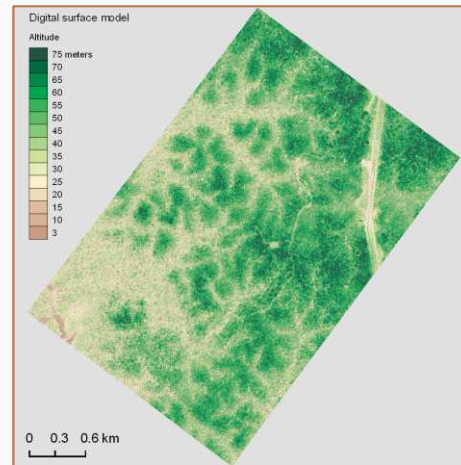
- As of september 2014, around 120 geographic reference datasets

Exemples

Forest plots



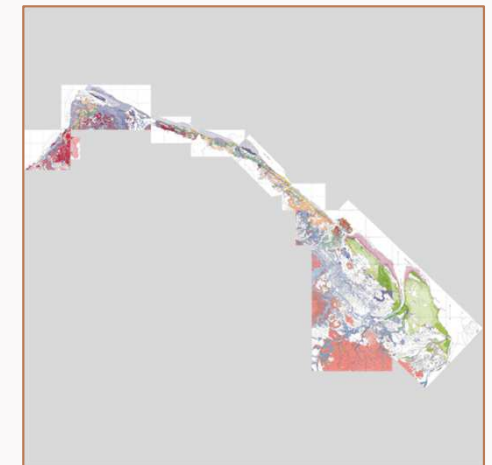
Aerial LIDAR) datasets



Aerial photographs

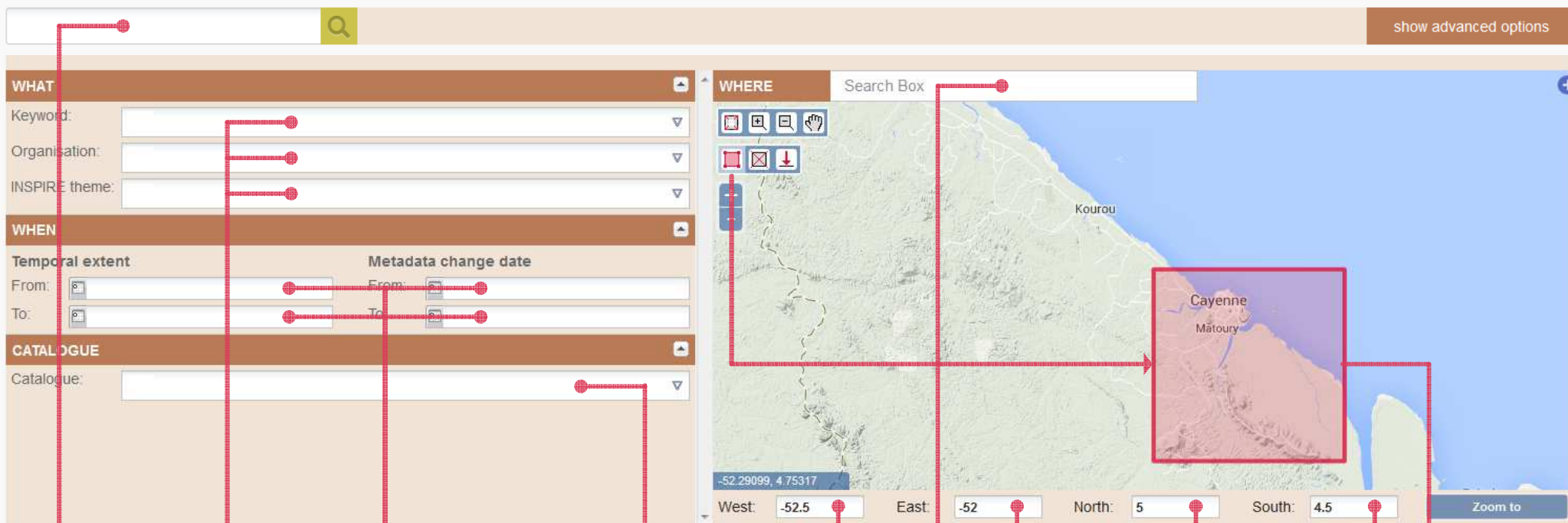


Thematic maps



and much more ...

Simple search and advanced search options



Free text

Keywords
Organisations
Topics

Temporal extent
Metadata change date

Interconnected catalogues

Place name

Bounding box coordinates

Bounding box

Results



show advanced options

French Guiana

FILTER

Organizations

Institut de recherche pour le développement (IRD) (12)

Keywords

- Landsat (12)
- satellite image (12)
- imageryBaseMapsEarthCover (12)
- remote sensing (12)
- Orthoimagery (12)
- Americas (12)
- labex CEBA (12)
- local coverage (12)
- South America (12)
- + Show more

Types

dataset (12)

Years

- 2012 (2)
- 2010 (1)
- 2009 (2)
- 2008 (3)
- 2005 (3)
- 1988 (1)

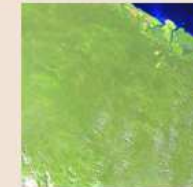
Sort by **Title** | 0 Selected | Other actions



Landsat 5 TM satellite image, path 227 row 57, acquired on 18 july 1988

The image is available for free on the USGS Glovis website.

Orthoimagery, Remote Sensing, Satellite Image, French Guiana, South America, Landsat, Local Coverage, Labex CEBA, Americas, ImageryBaseMapsEarthCover



Institut de recherche pour le développement (IRD)
Last update: 2014-06-12

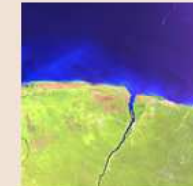
Web link



Landsat 5 TM satellite image, path 228 row 56, acquired on 2 September 2008

The image is available for free on the USGS Glovis website.

Orthoimagery, Remote Sensing, Satellite Image, South America, French Guiana, Suriname, Landsat, Local Coverage, Labex CEBA, Americas, ImageryBaseMapsEarthCover



Institut de recherche pour le développement (IRD)
Institut de recherche pour le développement (IRD)
Last update: 2014-07-08

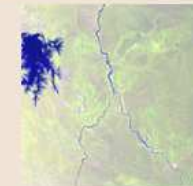
Web link



Landsat 5 TM satellite image, path 228 row 57, acquired on 5 September 2009

The image is available for free on the USGS Glovis website.

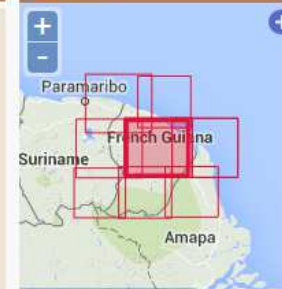
Orthoimagery, Remote Sensing, Satellite Image, South America, French Guiana, Suriname, Landsat, Local Coverage, Labex CEBA, Americas, ImageryBaseMapsEarthCover



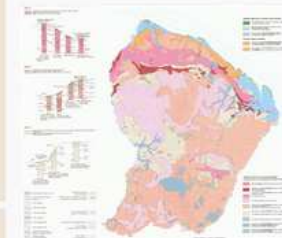
Institut de recherche pour le développement (IRD)
Institut de recherche pour le développement (IRD)
Last update: 2014-07-08

Web link

PREVIEW



Atlas des départements français d'Outre-Mer : 4. La Guyane. 4 mosaics of 4 map sheets and a set of 32 map sheets. Scale of 1:40 000 000 to 1:7 100. Date of publication: 1978-1979.



Labex CEBA

Centre d'étude de la biodiversité amazonienne
Immeuble Le Relais
2 avenue Gustave Charley
GF - 97300 Cayenne
Guyane française

Contact



Metadata sheet

attached ressources



Guyafor: permanent plots of forest inventories in French Guiana since 1968

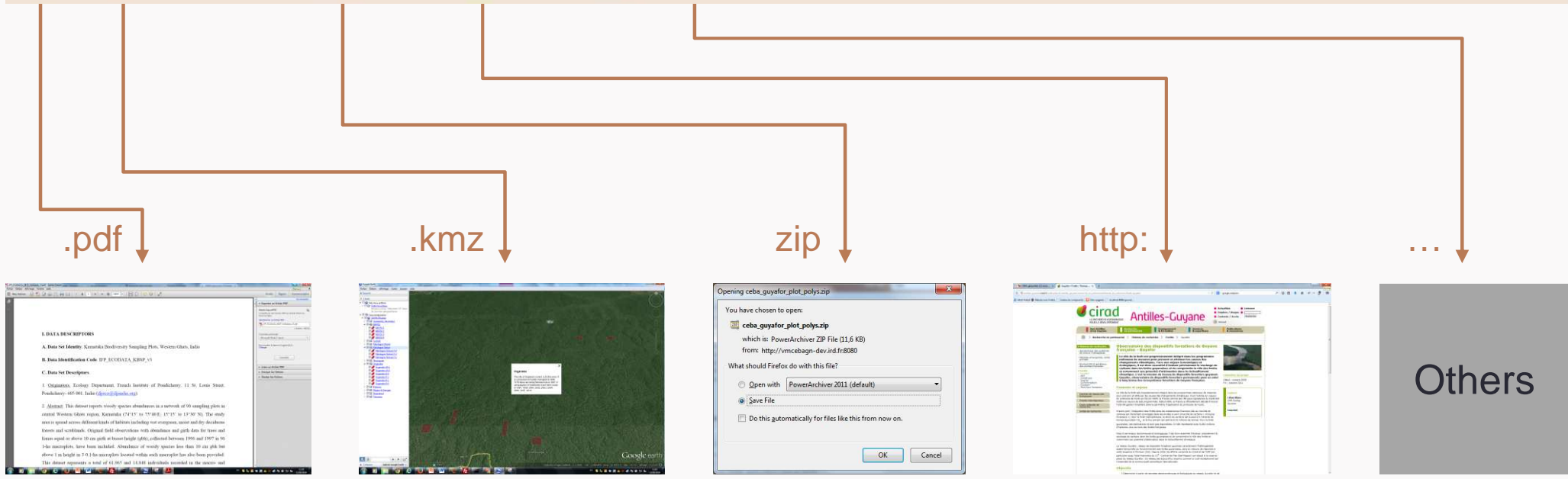
Guyafor is a network of permanent forest plots installed in French Guiana. The Guyafor Database compiles coordinates of the 11 sites (Paracou, Bafog, Organabo, Risquetout, Montagne Tortue, Saut Lavilette, Acarouany (Javouhey), Montagne Plomb, Tibourou, Nouragues, Laussat) and their subdivisions of the guianese permanent plots network. Each site con...

Species Distribution, South America, French Guiana, Biodiversity, Forest Conservation, Forest Ecosystem, Tropical Forest, Tropical Forest Ecosystem, Primary Forest, Natural Forest, Inventory Of Forest Damage, Forest Resource Assessment, Local Coverage, Labex CEBA, Dispositifs Forestiers GUYAFOR, Sampling Plots, Mesoscale Plot Network, Forest Structure, Tropical Forest Types, Forest Composition, Permanent Plots, Diameter Measurements, Americas, Paracou, Bafog, Organabo, Risquetout, Montagne Tortue, Saut Lavilette, Acarouany (Javouhey), Montagne Plomb, Tibourou, Nouragues, Laussat, Biota



Institut des sciences et industries du vivant et de l'environnement (AgroParisTech)
Laurent Descroix - Last update: 2014-09-12

 PDF
  View in Google Earth
  Download
  Web link
 



Details default view

Géoportail du CEBA

Home Catalog CEBA English

BROWSE >> SEARCH RESULTS >> Landsat 5 TM satellite image, path 227 row 57, acquired on 18 July 1988

Landsat

View mode Actions

Landsat 5 TM satellite image, path 227 row 57, acquired on 18 July 1988

The image is available for free on the USGS Glovis website.

Related link (URL) [Glovis metadata](#)
[Glovis download](#)

Identification info

Title	Landsat 5 TM satellite image, path 227 row 57, acquired on 18 July 1988
Date	1988-07-18
Date type	Creation: Date ident
Code	LT52270571988200C
Abstract	The image is available
Status	Completed: Product

Point of contact

Individual name	Proisy, Christophe
Organisation name	Institut de recherche développement (IRD)
Role	Point of contact
Maintenance and update frequency	Not planned: There

Graphic overview

Graphic overview

[large_thumbnail](#)

Descriptive keywords (GEMET - INSPIRE themes, version 1.0 INSPIRE themes)	Orthoimagery (Theme)
Descriptive keywords (GEMET - Concepts, version 2.4)	remote sensing, satellite image (Theme)
Descriptive keywords (Region)	French Guiana, South America (Place)
Descriptive keywords	Landsat, local coverage, labex CEBA

Language English

Character set UTF8: 8-bit variable size UCS Transfer Format, based on ISO/IEC 10646

Topic category code Imagery base maps earth cover

Extent

Geographic bounding box

WGS 84

North bound 5.22015

South bound 3.45892

West bound -53.8486

Extent

Temporal Extent

Begin date	1988-07-18
End date	1988-07-18

Distribution Information

Distribution format

Name	GeoTIFF
Version	1.0

Transfer options

Reference System Information

Unique resource identifier	WGS 84 / UTM zone 22N (EPSG:32622)
Codespace	EPSG
Version	7.9

Data quality info

Hierarchy level	Dataset: Information applies to the dataset
-----------------	---

Lineage

Statement	1. Raw data downloaded from USGS Glovis (http://glovis.usgs.gov)
-----------	---

Metadata

File identifier	319166cb-1765-4c17-94bc-6288d34d79d
Metadata language	English
Character set	UTF8: 8-bit variable size UCS Transfer Format, based on ISO/IEC 10646
Hierarchy level	Dataset: Information applies to the dataset

Contact

Individual name	AMAP géoportail	Electronic mail address	amap.géoportail@ird.fr
Organisation name	Institut de recherche pour le développement (IRD)		
Role	Point of contact		

Link your publications with your dataset

Supplemental Information

Bibliography :

Vincent. G., D. Sabatier, L. Blanc, J. Chave, E. Weissenbacher, R. Pélissier, E. Fonty, J. F. Molino, and P. Coutron. 2012. Accuracy of small footprint airborne LiDAR in its predictions of tropical moist forest stand structure. Remote Sensing of Environment 125:23-33

Spatial resolution

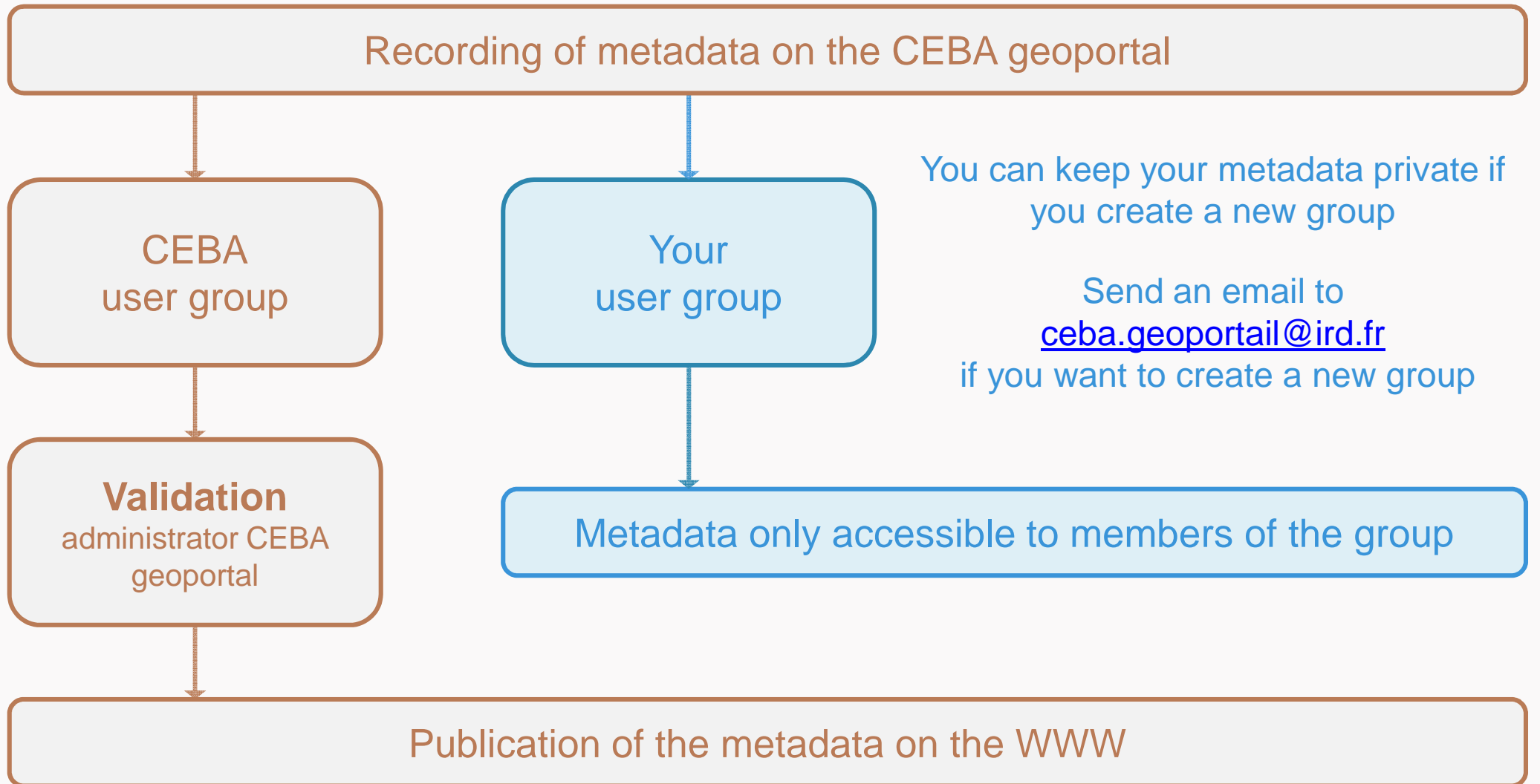
Distance	30 m
----------	------

2 avenue Gustave Charliery
GF - 97300 Cayenne
Guyane française

Conception : Rainer Zaiss
Powered by geonetwork

Metadata workflow

Restricted user group

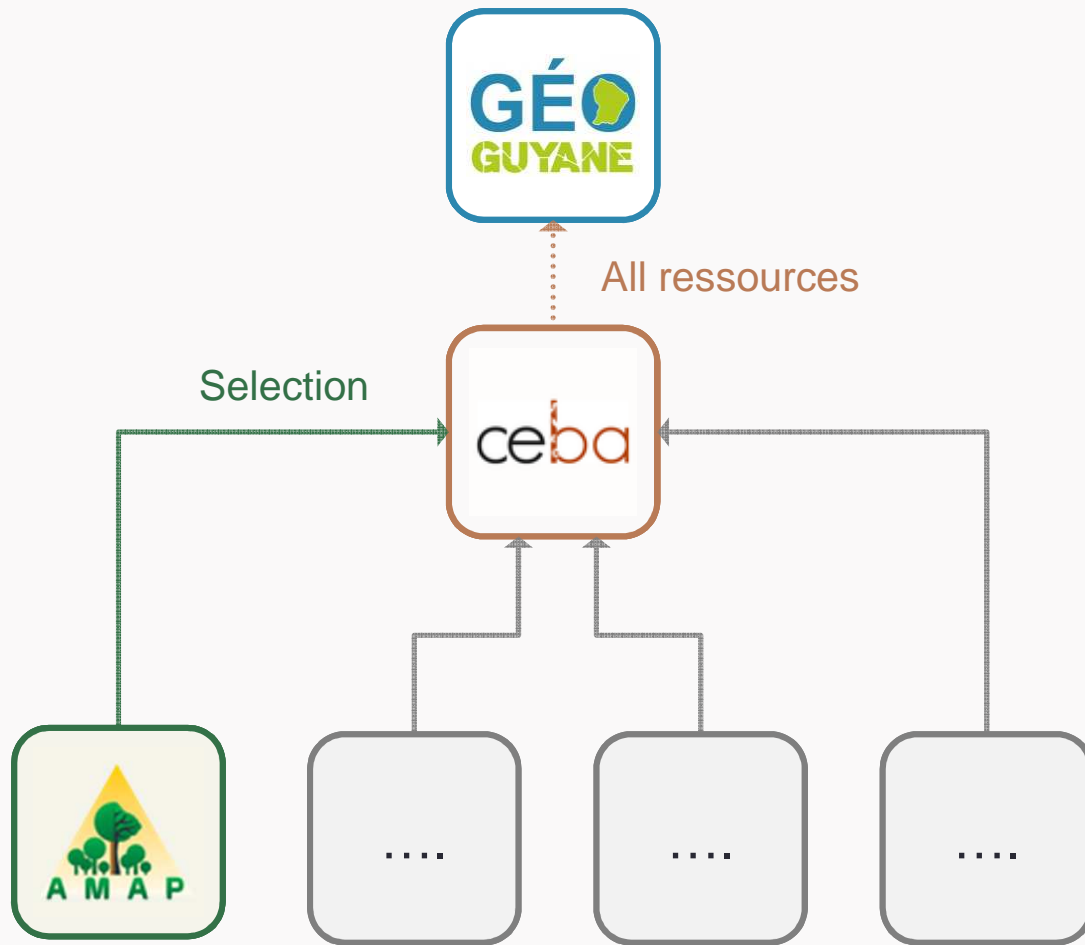


You can keep your metadata private if you create a new group

Send an email to ceba.geoportail@ird.fr if you want to create a new group

How to participate

Harvesting of other catalogues



Connexion of existing geoportals

If your metadata are already available on another geoportail

If you have a geoportail to connect

contact

ceba.geoportail@ird.fr

How to participate

Inventory your own datasets

If you want to inventory a new dataset

Ask for a user account ceba.geoportail@ird.fr

Login

Follow step by step the user guide



Speed metadata session

Géoportail du CEBA

Formation pour inventorier des données géographiques sur le portail

Programme de la formation

Mercredi 15 octobre 2014

- 9h30-10h30 Présentation générale du géoportail
- 10h30-11h00 Pause-café
- 11h00- 12h30 L'espace personnel et la création d'une nouvelle fiche de métadonnées
- 12h30-13h30 Repas
- 13h30-15h00 Enregistrement de vos propres métadonnées
- 15h00-15h30 Pause-café
- 15h30-17h00 Table ronde avec les participations autour de la question comment gérer le géoportail dans le labex CEBA

Judi 16 octobre 2014

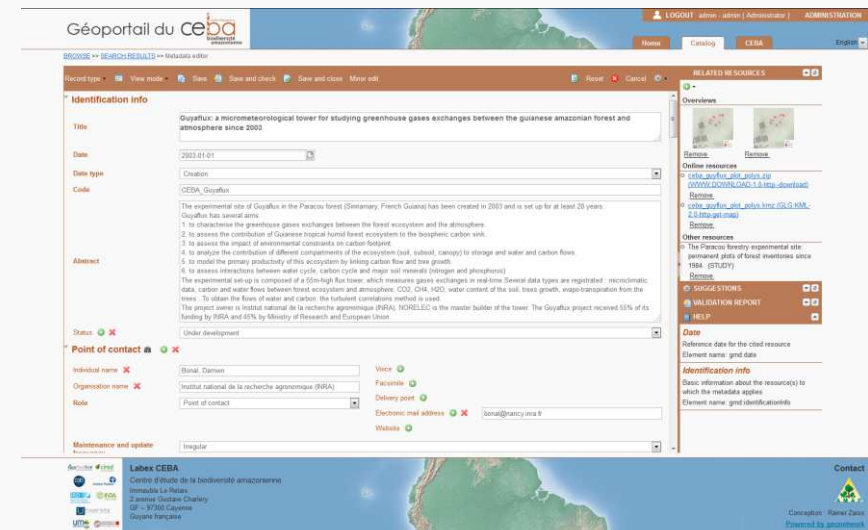
- 9h30-10h30 Enregistrement de vos propres métadonnées
- 10h30-11h00 Pause-café
- 11h00- 12h30 Enregistrement de vos propres métadonnées
- 12h30-13h30 Repas
- 13h30-15h00 Enregistrement de vos propres métadonnées

Date de la formation : 15-16 octobre 2014

Lieu : [Laboratoire Evolution & Diversité Biologique](#)
Université Toulouse III Paul Sabatier
Bâtiment 4R1
118, route de Narbonne
31062 Toulouse cedex 9
France

Salle : salle du 1^{er} 110

Contact : ceba.geoportail@ird.fr



Take the opportunity to inventory your own data



Labex CEBA
Centre d'étude de la biodiversité amazonienne
Immeuble Le Relais
2 avenue Gustave Charley
GF - 97300 Cayenne
Guyane française



Contact
Conception : Rainer Zaiss
Powered by geonetwork